



Network Plan

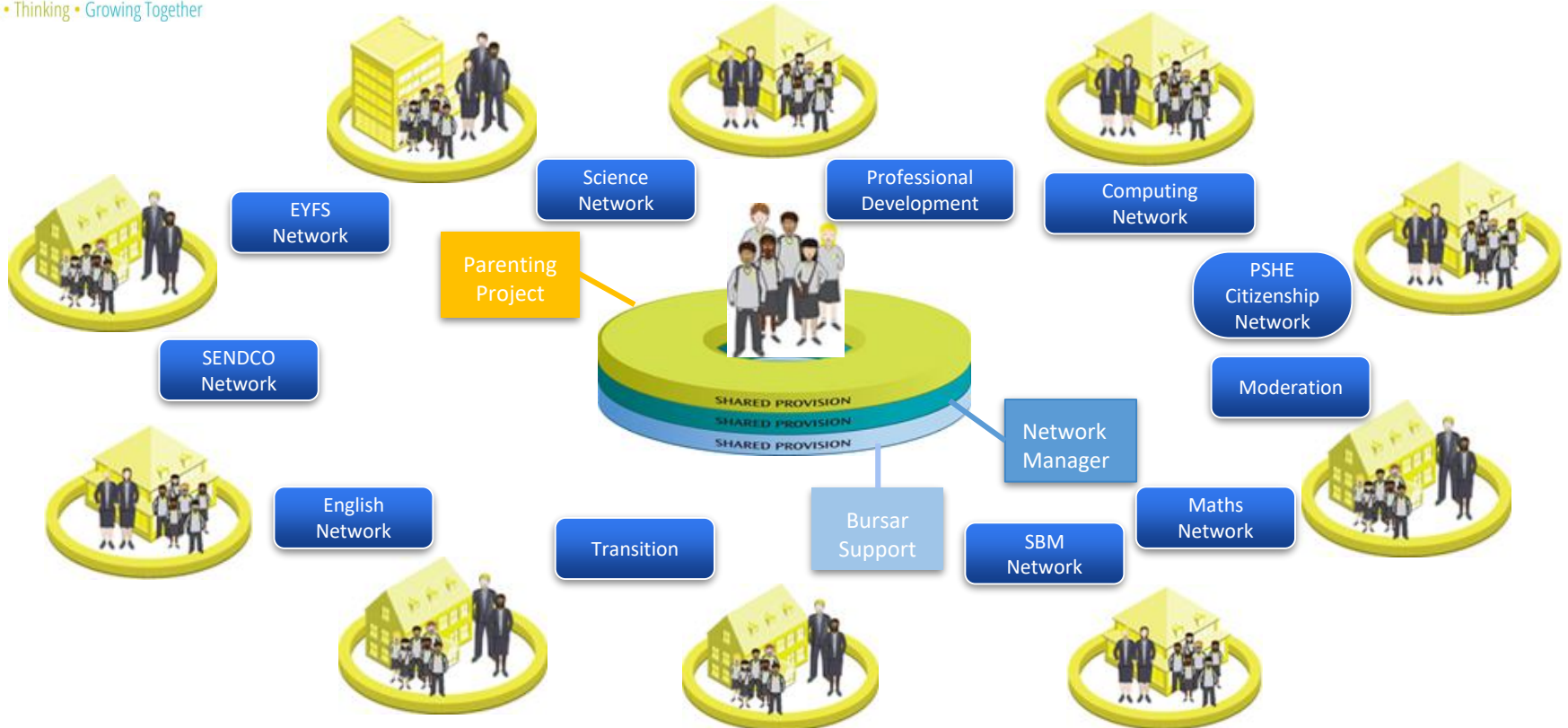
2022-23

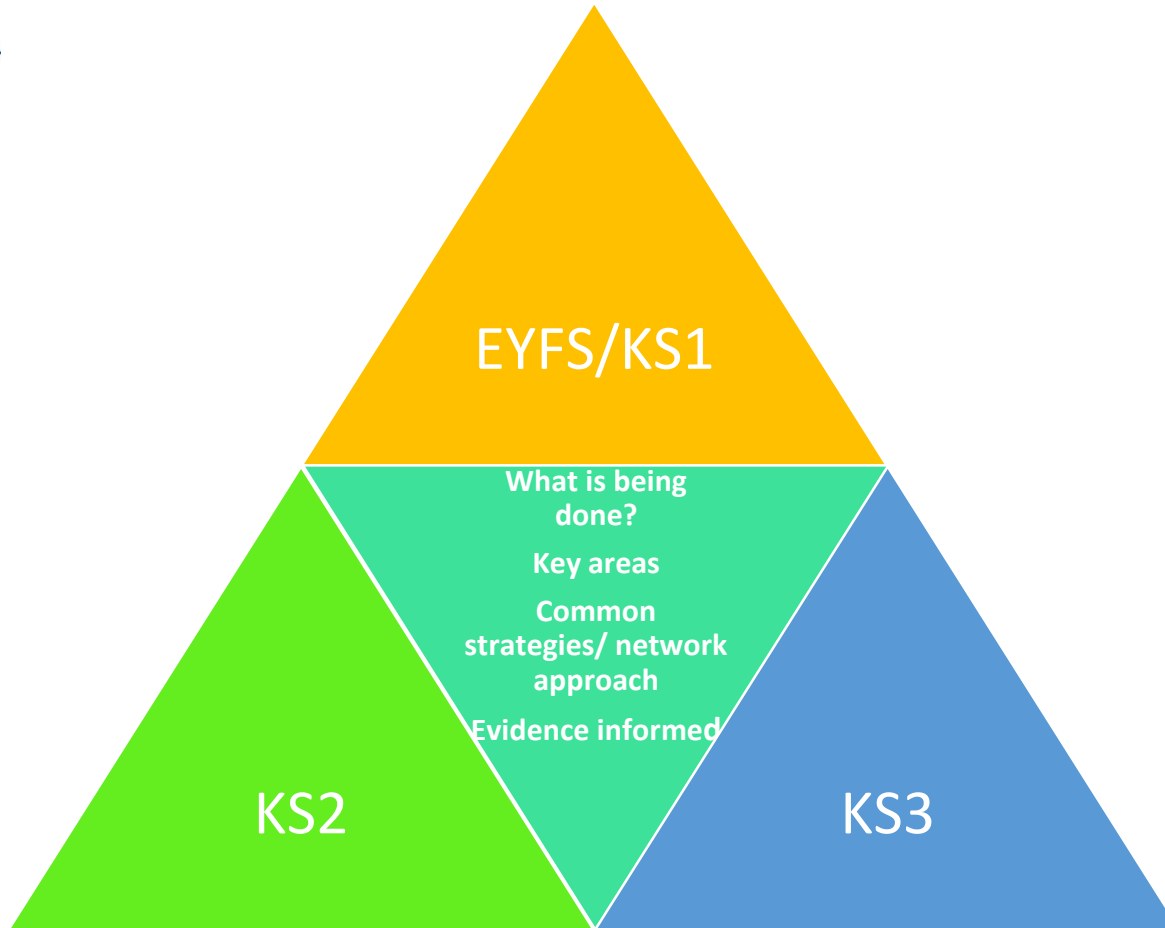


The shared imperative/key aim for the Network is to raise standards of achievement, improve pupil learning and enhance the curriculum; ensuring that the network schools can achieve more together than they would be able to as individual settings.

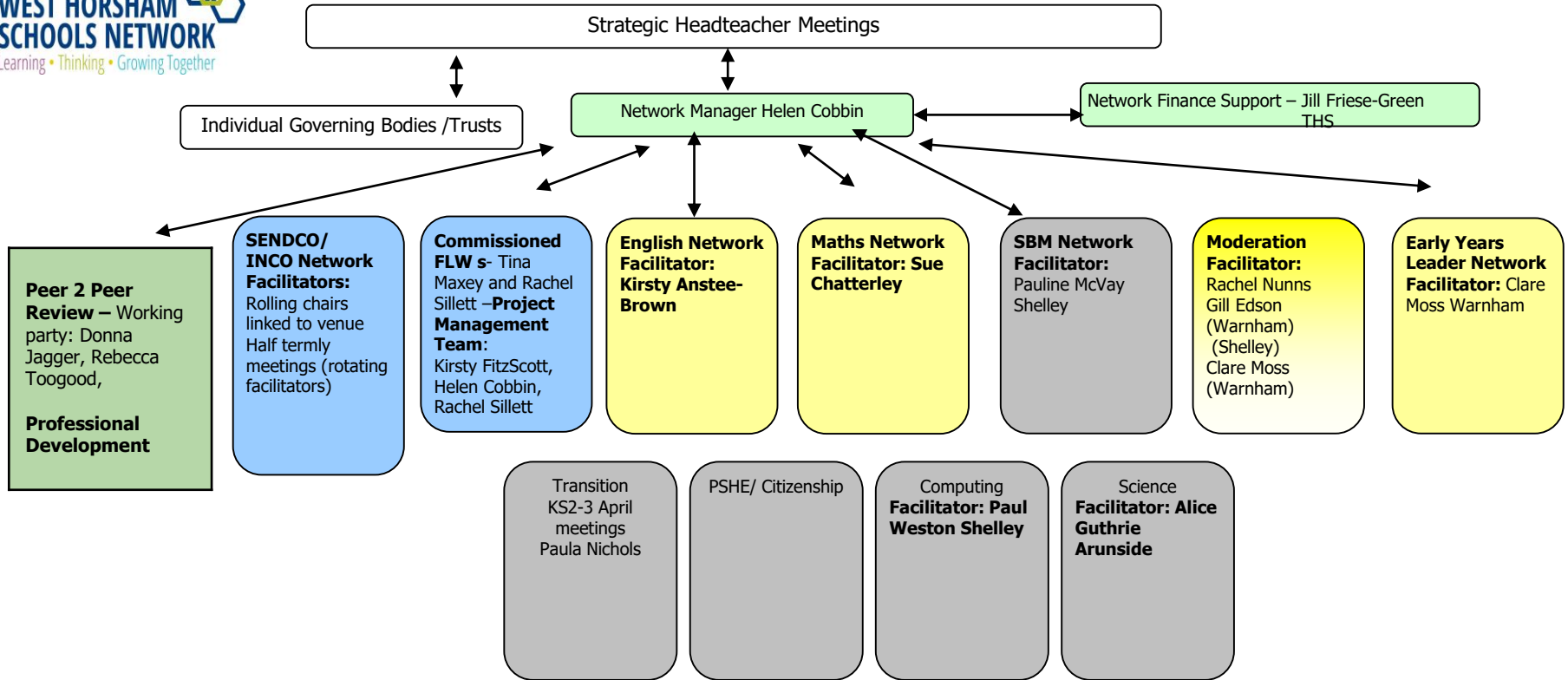
It is recognised that a Headteacher's first responsibility is to their school community and that each school retains its distinctiveness, however our key duty is for all the children and young people across the locality.

WHSN Memorandum of Understanding





Network/ Project	Key Foci 2022-23	Impact Review Summer Term 2023
SEND	<ul style="list-style-type: none"> ● Colleagues agreed the focus for teachers is how to adapt teaching to include the inclusive approaches -skilling teachers to use OAIP guidance and NASEN SEND Handbook for Teachers ● Working memory (training) 	
English	<ul style="list-style-type: none"> ● Lowest 20% of readers - trialling strategies and reporting back ● Writing stamina -approaches 	
Maths	<ul style="list-style-type: none"> ● Mathematical vocabulary use, impact and comparisons across schools ● Engaging parents/ carers with maths - approaches across the network ● Fluency in numeracy ● Multiplication ● CPD Marketplace Event for schools - using manipulatives 	
EYFS	<ul style="list-style-type: none"> ● Sound production -how to model/ support in the day ● EAL -training 1.12.22 ● ADHD ● Challenge in continuous provision ● Maths -2 schools using mastery and can feedback on impact etc 	
Science	<ul style="list-style-type: none"> ● Establishing the network ● Audit of common themes to inform agendas/ foci 	
Computing	<ul style="list-style-type: none"> ● Establishing the network ● Audit of common themes to inform agendas/foci 	
PSHE	<ul style="list-style-type: none"> ● Establishing the network ● Audit of common themes to inform agendas/foci 	
SBM	<ul style="list-style-type: none"> ● Opportunities to look at cost effective practices across network ● Recognise areas of common need and support - joint training opportunities 	



The shared imperative/key aim for the Network is to raise standards of achievement, improve pupil learning and enhance the curriculum

Service Specification WHSN Parenting Initiative

Service Specification Aim of the Service

- To support parents across the locality by building their capacity to meet the needs of their children
- To reduce child in need referrals through early intervention at a local level
- To provide a bridge between home and school.

Description of Service

- The service will be delivered through training workshops across the locality schools for parents
- Invitations/ promotion will be made through identified points of contact -eg the SENCO/INCO at each school
- Workshops will be hosted by schools with a member of staff from the host school to be present
- Follow up support will be provided via phone or face to face contact

Professional Development Peer School-to-School Review

Principles:

Why are we doing this?

- To benefit all pupils with the combined wisdom of schools across the locality networks
- To share practice and learn from each other's schools
- To validate own practice
- To recognise challenges are mirrored
- To develop professional articulations in giving feedback in a supportive and professional manner

Protocols:

Agree protocols to be shared with all staff – use of powerpoint

Procedures:

- Agree area of focus
- Agree structure of visit –
 - Who?
 - What? (purpose -what does the school want to get out of the visit...) this could then inform the details of the visit -ie observations, meeting pupils/ staff for discussion etc
 - Feedback format – could include a standardised format

All Headteachers have been given the link to a Peer Review folder containing all relevant materials plus a powerpoint to share with staff and stakeholders :Peer Review resource folder

The shared imperative/key aim for the Network is **to raise standards of achievement, improve pupil learning and enhance the curriculum**; ensuring that the network schools can achieve more together than they would be able to as individual settings.



WEST HORSHAM SCHOOLS NETWORK

Learning • Thinking • Growing Together

*This is a living plan which will be the 'touchstone' for network meetings throughout the year, it will be amended as necessary.
'We support one another to grow, and we turn to one another to learn.' Chilly's*